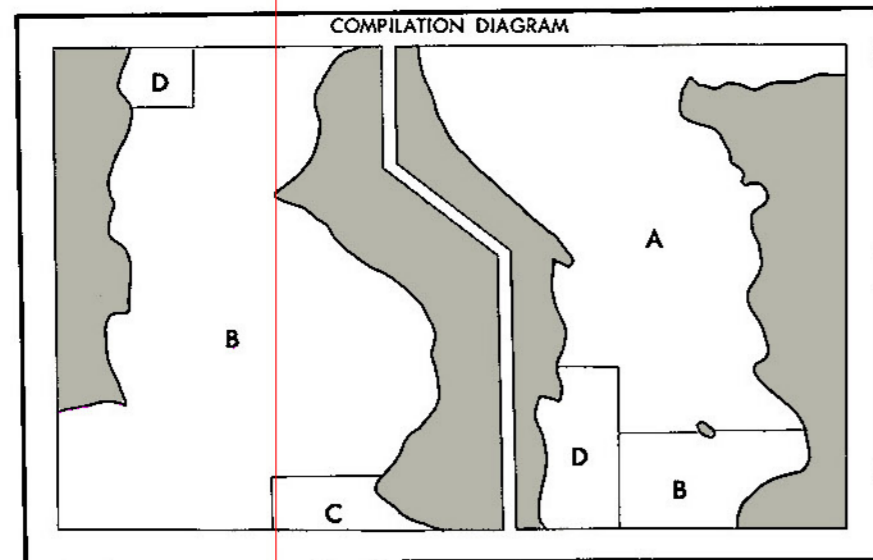


SOUTH AMERICA
VENEZUELA
MARACAIBO CHANNEL

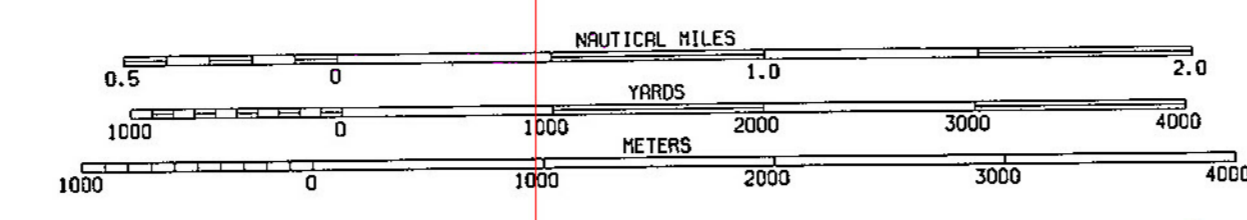
From Venezuelan and British Admiralty charts to 1980

1st Ed., July 1988



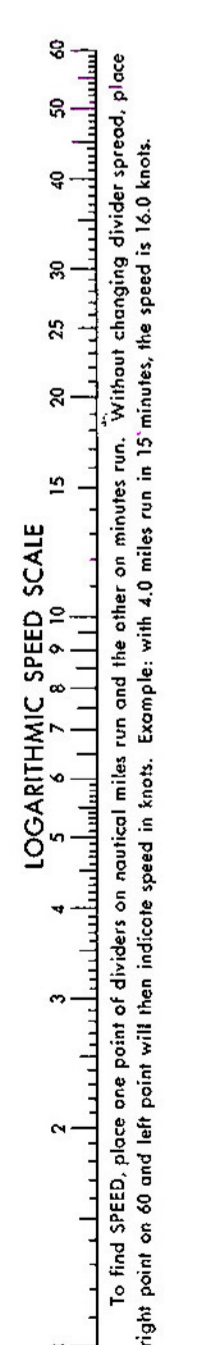
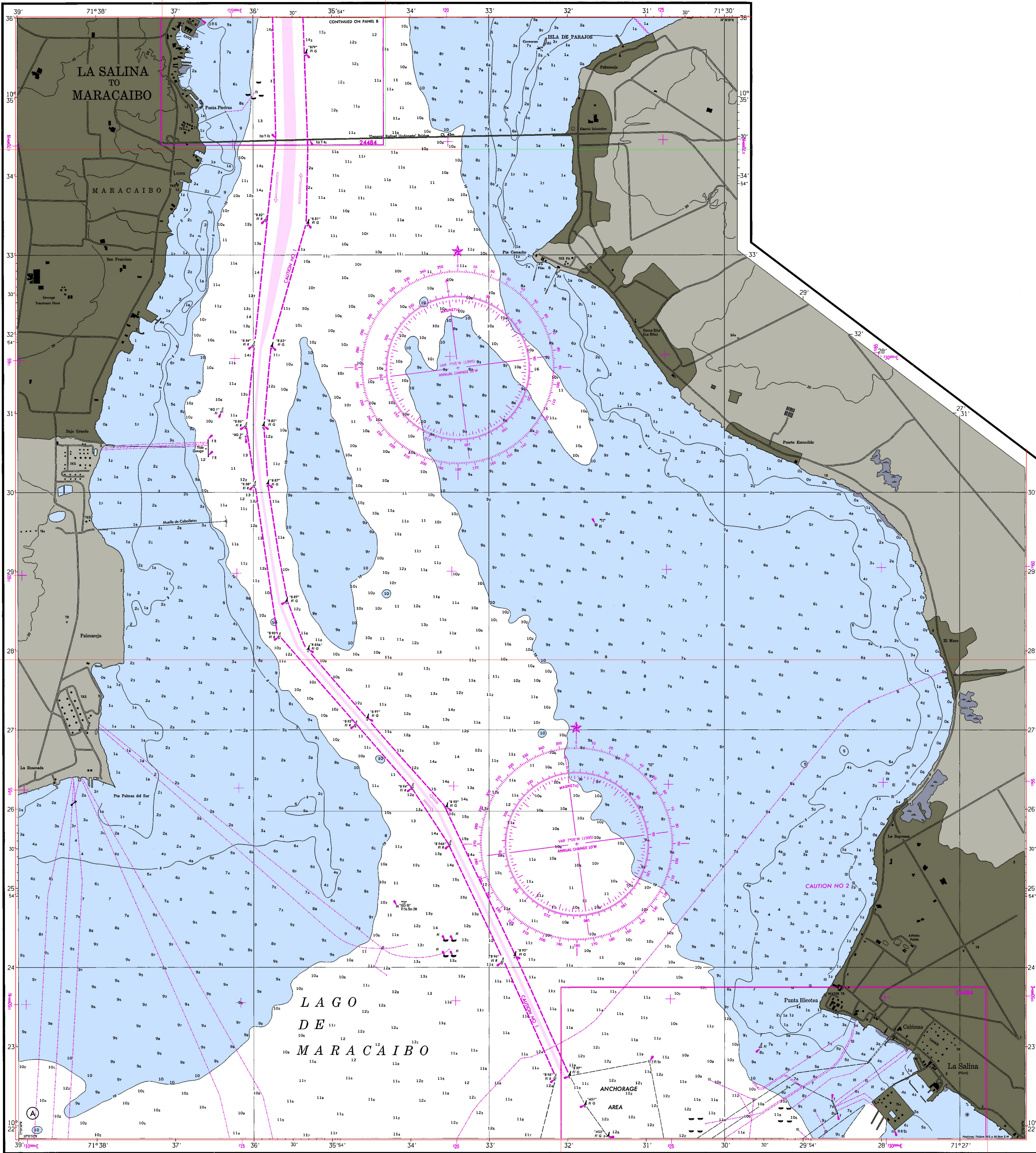
A—Venezuelan Chart 1003 1:20,000, Ed. 1973
B—Venezuelan Chart 1004 1:20,000, Ed. 1973
C—British Admiralty Chart 1224 1:20,000, Ed. 1980
D—Venezuelan Chart 1011 1:12,500, Ed. 1970
Hullwreck data

GLOSSARY
Boya, light light
Banco bank
Cabo cape
Cerro hill
Cerro Alto high hill
Cerro Bajo low hill
Cerro Grande high hill
Cerro Pequeño low hill
Cerro Redondo round hill
Cerro Verde green hill
Cerro Negro black hill
Cerro Blanco white hill
Cerro Rojo red hill
Cerro Amarillo yellow hill
Cerro Azul blue hill
Cerro Gris grey hill
Cerro Negro black hill
Cerro Verde green hill
Cerro Blanco white hill
Cerro Rojo red hill
Cerro Amarillo yellow hill
Cerro Azul blue hill
Cerro Gris grey hill



MERCATOR PROJECTION
WORLD GEODETIC SYSTEM—1984 (WGS-84)
SCALE 1:35,000
For Symbols and Abbreviations, see Chart No. 1

24482



2nd Ed., Jan. 3, 1995 (Correct through NM 22/95)
24482
DISTRIBUTION NO. 24AHA24482

SOUNDINGS IN METERS

TIDAL INFORMATION

Place	Height above datum of soundings		Mean Low Water	
	Higher	Lower	Lower	Higher
Pta de Palmira	0.6	0.6	0.1	0.1
Maracaibo	0.5	0.4	0.1	0.1

NOTE
Limits of next larger scale chart(s) are shown in purple. Users should consult chart(s) which may contain later information.

NOTE
The Traffic Separation Scheme(s) on this chart is not approved by the International Maritime Organization (IMO).

Prepared and published by the
DEFENSE MAPPING AGENCY HYDROGRAPHIC/TOPOGRAPHIC CENTER
Bethesda, MD
© Copyright 1985 by the United States Government.
No copyright claimed under Title 17 U.S.C.